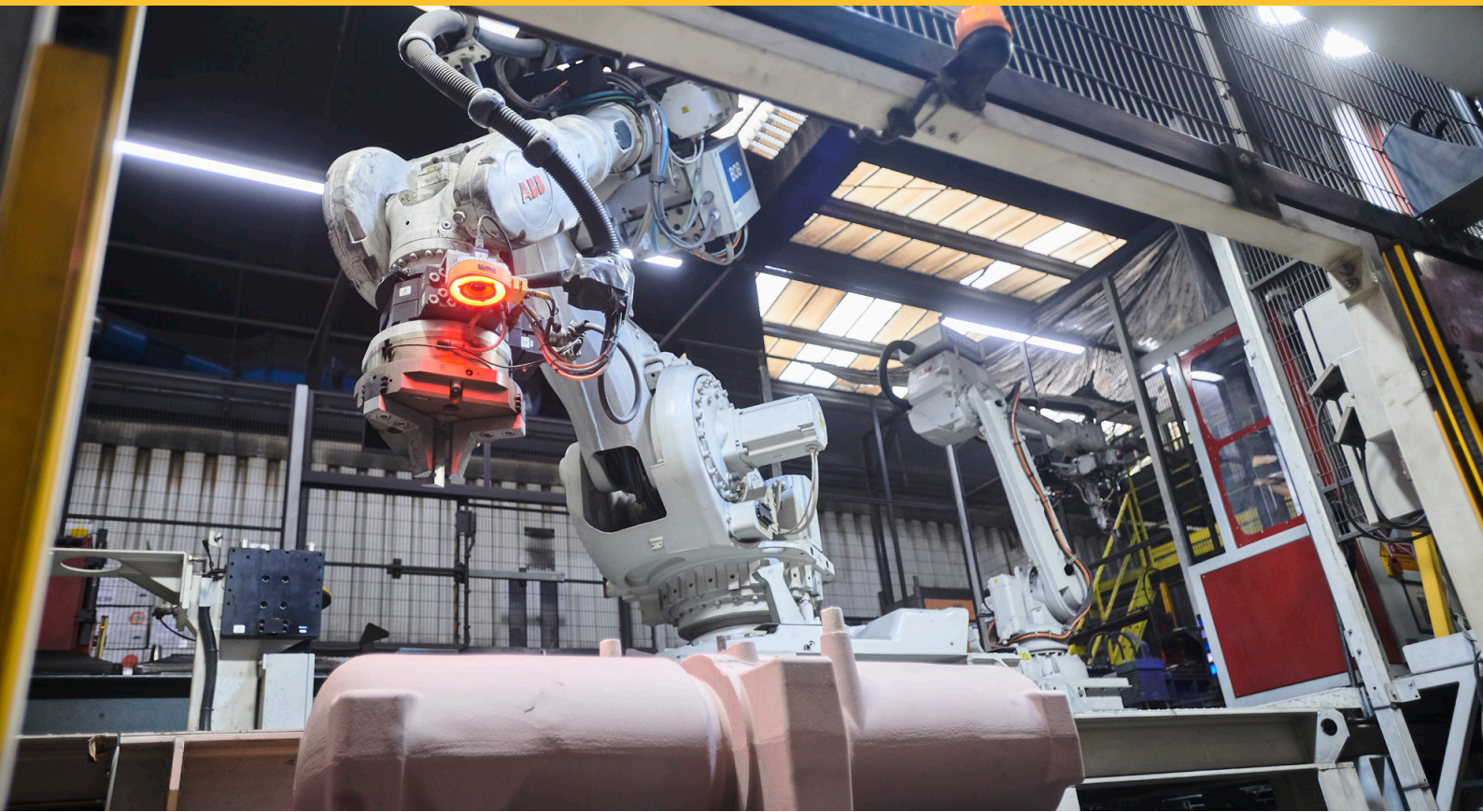


ENGINEERED CASTING SOLUTIONS



PROFERRO



Engineered Casting Solutions

ABOUT PROFERRO

Proferro has more than 85 years of experience in co-engineering, castings, machining, assembly, and the testing of mechanical components.

Proferro is part of Picanol Group, a business unit of Tessenderlo Group (Euronext: TESB).



CONSIDERABLE EXPERIENCE AND WORLDWIDE EXPERTISE

Proferro offers engineered casting solutions for medium-sized series of 500 to 20,000 pieces, in a long-term partnership context. Proferro supplies original equipment manufacturers worldwide in various market segments.

MILESTONES

2023

Investment in AGV Reachtrucks for internal transport.

2021

Investment in new high-bay warehouse.

2020

1,000,000th molding box on the HWS molding line.

2019

Additional robot on the HWS molding line.

2017

Getting certified with the Deutsche Bahn certificate.

2014

Investment in 3D measuring equipment.

2013

New core shooting machine and extension HWS line.

2010

New HWS molding line.

1995

Investment in a new melting plant.

1989

Foundation of Proferro as an autonomous foundry.

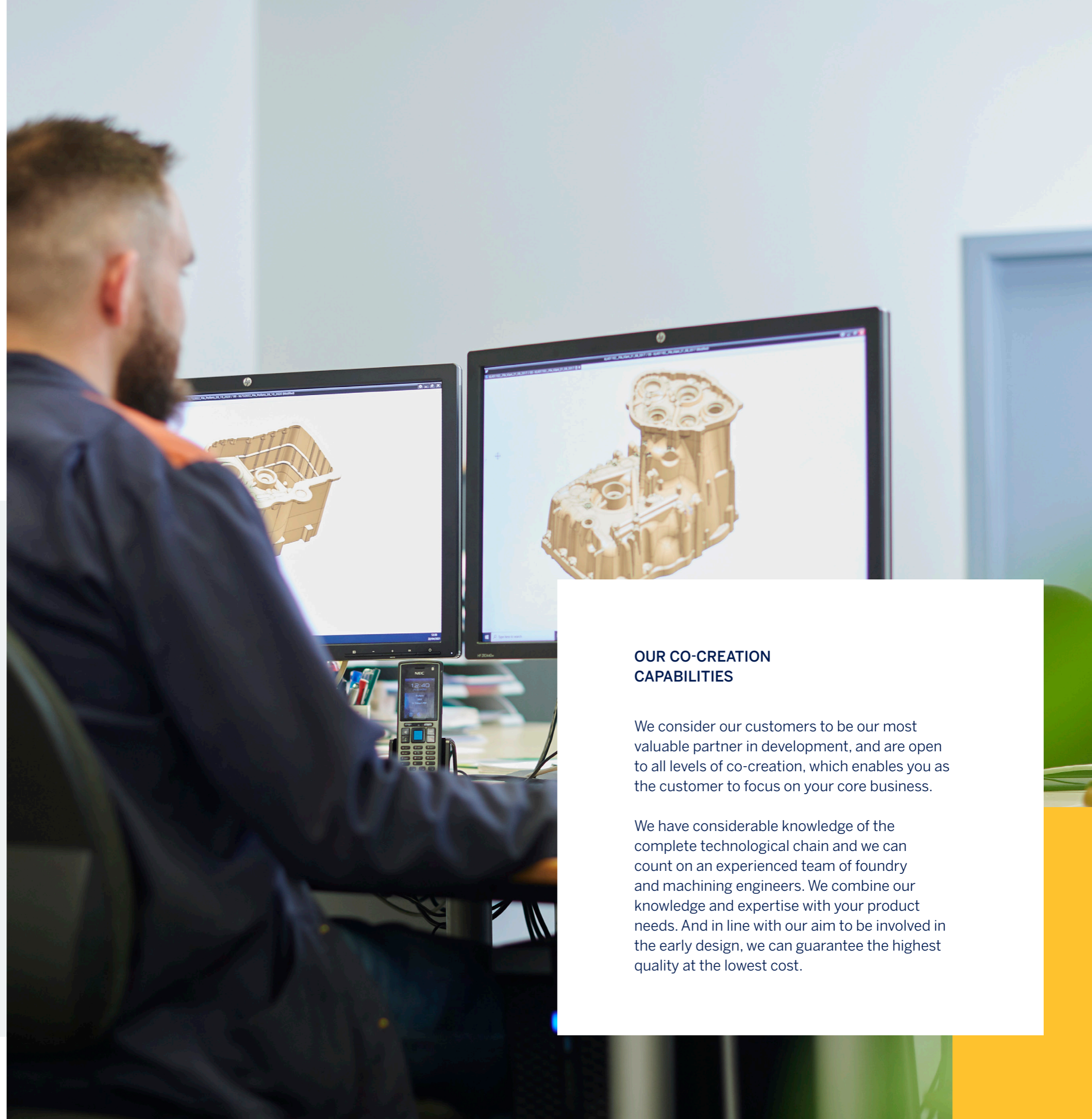
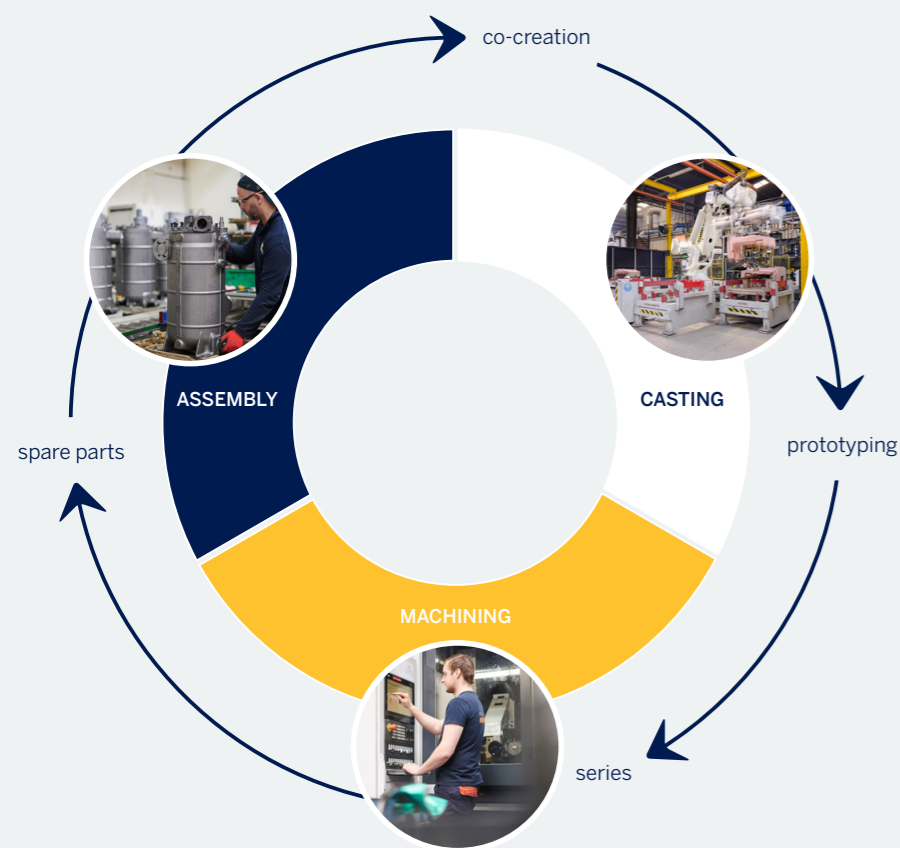
1936

Foundation of Picanol.

OUR STRATEGY

Proferro's strategy is based on three pillars: casting, machining and assembly. This strategy is personalized through sales, co-creation and other supporting services. Proferro wants to offer its customers maximum added value and contribute to their success.

THREE PILLAR STRATEGY



OUR CO-CREATION CAPABILITIES

We consider our customers to be our most valuable partner in development, and are open to all levels of co-creation, which enables you as the customer to focus on your core business.

We have considerable knowledge of the complete technological chain and we can count on an experienced team of foundry and machining engineers. We combine our knowledge and expertise with your product needs. And in line with our aim to be involved in the early design, we can guarantee the highest quality at the lowest cost.

01 CASTING

At Proferro, we produce a wide range of machined castings for original equipment manufacturers. This includes high-tech parts in lamellar and nodular cast iron from 50 to 500 kg, with box dimensions of 1600x1200x(2x400).



02 MACHINING

When it comes to mechanical finishing, we at Proferro have various facilities both for prototyping and series production, using a very wide range of technologies. This includes CNC machining, gear cutting/grinding, thermal treatment, and welding. With more than 100 CNC machines, we are clearly a specialist in machining parts.



THE FOLLOWING SPECIFICATIONS APPLY TO OUR CAST IRON

Grey cast iron
EN1561 //
EN-GJL 150 - 200 - 250 - 300

Ductile cast iron
EN1563 //
EN-GJS 400 - 450 - 500 - 600 - 700



03 ASSEMBLY

In our aim to be a one-stop-shop for our customers, Proferro also assembles (and even tests) cast iron parts, next to casting and machining. This takes into account the optimal logistic chain we can offer at our production facilities that is aimed at assuring just-in-time delivery to our customers.



TOP QUALITY

Quality is built into our products and services – from the development and planning, all the way through to procurement, production, assembly, testing, and training services. In 1994, Proferro obtained the ISO 9001 certificate, which confirmed our role as a trendsetter in the quality assurance field in our sector.



CONTROL, INSPECTION AND CERTIFICATION

We appeal, amongst other things, to process controls and final inspection: spectrometric analysis, thermal analysis, ultrasonic testing, mechanical testing, micrography and 3D control systems. Furthermore, we are certified by various inspection bodies to provide test certificates for cast iron vessels.



OUR MARKETS

Proferro supplies high-quality, high-technology castings worldwide to original equipment manufacturers in various market segments such as agricultural machinery, earthmoving machinery, compressors, textile machinery, and general engineering.

By combining casting, mechanical finishing, assembly, and co-design, Proferro can successfully respond to the increasing demand for larger, technically more difficult, and core-intensive parts.



compressors

FROM IRON TO ECO

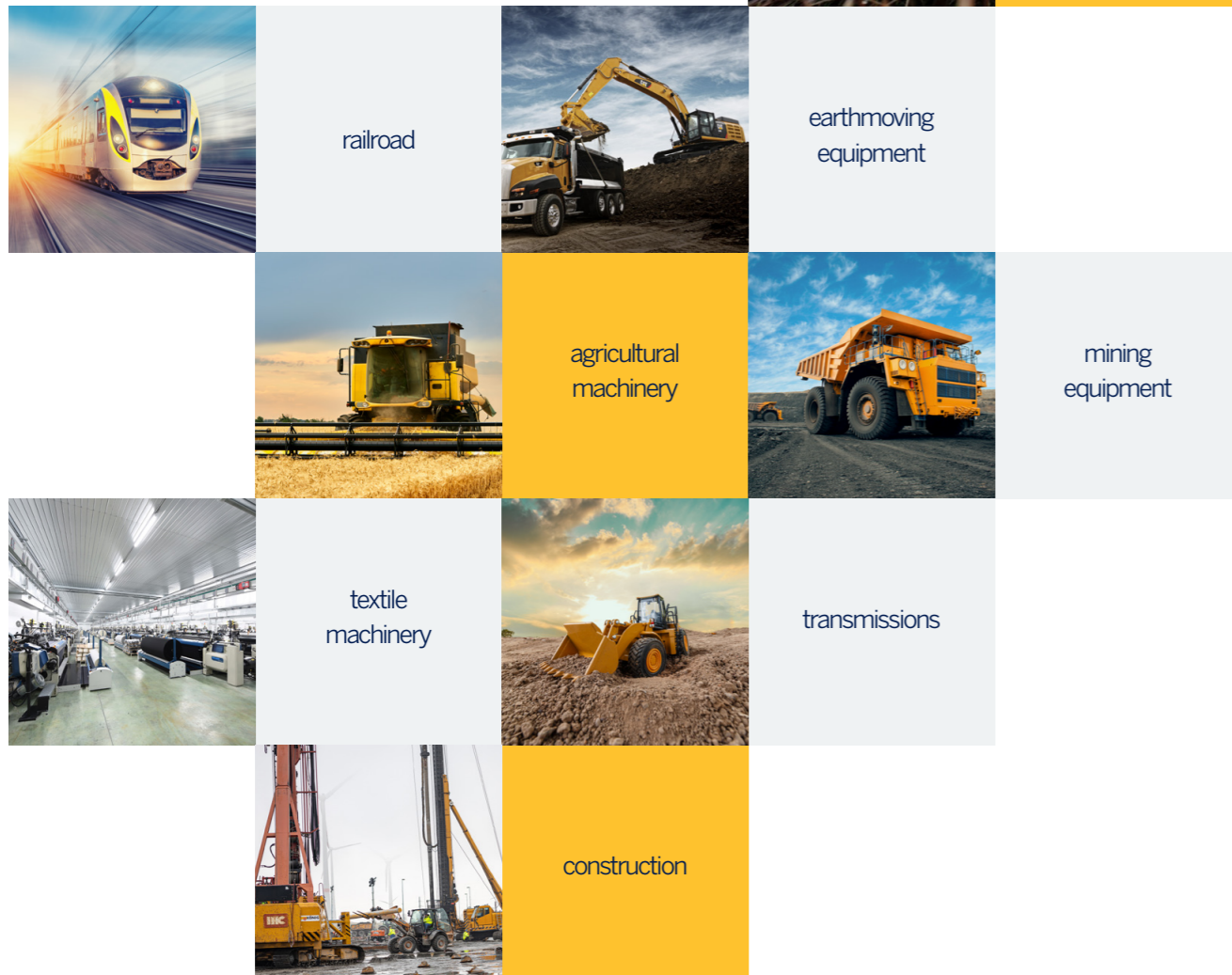
At Proferro, we believe that every ending is a new beginning. This is a sustainable conviction that we live up to on a daily basis by focusing on circular production, energy efficiency, and a wide range of environmentally friendly initiatives. We aim to set a new standard in the foundry industry, combining our passion for excellence with a deep respect for the environment. Our commitment to sustainability is not only a responsibility but also an opportunity to create innovative solutions that improve the world around us.

We have an iron will to create a promising, ecological future. From iron to eco.



FIND OUT MORE

More info on our website
www.proferro.be/sustainability





+32 57 222 111
info@proferro.be
Stevelyncklaan 15
8900 Ieper - Belgium

www.proferro.be

Contact our sales team



PROFERRO

Engineered Casting Solutions

Part of Tessenlo Group